

UNDER MODE OF DESPATCH

BHARATHIAR UNIVERSITY: COIMBATORE - 641 046

No. BU/R-D8/ES-laboratory-fur/14822/2021-22

Date : 21.10.2021

TENDER NOTICE

Sealed Tenders are invited by the Registrar, Bharathiar University, Coimbatore 641 046 upto 3.00 p.m. on 12.11.2021 for Supply of Laboratory furniture for Green technology lab in the department of Environmental Science, Bharathiar University at Coimbatore.

Tender Documents can be downloaded from our website: www.b-u.ac.in. From 28.10.2021 to 12.11.2021. The cost of the tender documents Rs.788/-and EMD Rs.8,900/- has to be enclosed in the form of DD or by bank challan in the Bank of India, Bharathiar University drawn in favour of "The Registrar, Bharathiar University, Coimbatore" while submitting the tender.

REGISTRAR i/c

BHARATHIAR UNIVERSITY COIMBATORE: 641 046
TENDER CONDITIONS AND INSTRUCTIONS FOR

Supply of Laboratory furniture for Green technology lab in the department of Environmental Science, Coimbatore.

- 1 Sealed Tenders will be received by the Registrar up to 3.00 p.m. on 12.11.2021 for "Supply of Laboratory furniture for Green technology lab in the department of Environmental Science, Bharathiar University at Coimbatore" as given in the schedule.
- 2 **The tender shall be submitted in a sealed cover superscribed as "Tender for Supply of Laboratory furniture for Green technology lab in the department of Environmental Science, Bharathiar University at Coimbatore due on 12.11.2021 at 3.00 p.m.**
- 3 **The tenders will be opened by the Registrar in the Registrar's Chamber at 4.00 p.m. on 12.11.2021 in the presence of tenderers who are present.**
- 4 Each tender shall be accompanied with an **EMD of Rs.8,900/- (Rupees eight thousand and nine hundred only)** in the form Bank of India Challan or DD drawn in one of the **Nationalized Banks** in the name of "Registrar, Bharathiar University" payable at Coimbatore. Cheques and Bank Guarantees will not be accepted. Tenders without EMD shall be summarily rejected. EMD will not carry any interest.
- 5 Tenders received late will be returned to the tenderer unopened.
- 6 The entries in the tender schedule shall be as for as possible without scoring, corrections and over writings and shall be legible. The unavoidable correction or scoring shall be attested by full signature of the tenderer. The tenderer should sign on each page of the tender document.
- 7 In the tender schedule the tenderer should quote his rates for each item separately in figures and words in the corresponding column.
- 8 If the rates quoted in the schedule differ in words and figures, the lowest quoted rate will be taken. The unit rates quoted in the schedule is those governing payment.
- 9 Taxes or any other charges if any shall be clearly mentioned specifying the percentage. If this is not specifically mentioned it will be taken that the rates quoted are nett.
- 10 **If the tenderers quotes the price with GST, should mention the valid GST registration Number along with the copy of the registration Certificate.**
- 11 The rate quoted shall be for delivery at University Campus.
- 12 No revision of rates at any cost will be accepted.
- 13 Tender documents are not transferable.
- 14 The tender shall be submitted only in this official form and the tenderers should sign on each page of the all tender documents and enclosed without any omission.
- 15 **The tender shall be valid for a minimum of 180 days from the date of opening.** Tenderer should not withdraw his tender after the tenders are opened. In case the tender is withdrawn after it opened, the EMD remitted will be forfeited.
- 16 The EMD of the unsuccessful tenders will be refunded immediately after the tenders are disposed of by the competent authority.
- 17 Successful tenderer shall remit a security deposit of 5% of the accepted tender order value and execute an agreement on Tamilnadu stamp paper to the value of Rs.100.00. Failure to execute the agreement within the stipulated time will entail in forfeiture of the EMD. Security Deposit will be refunded after audit/warranty period is over.

- 18 The material should be supplied within the stipulated period mentioned in the supply order. If the supply is not made within the period the supply order will be cancelled and EMD will be forfeited.
- 19 The materials quoted shall confirm **ISI standard**. The make of the materials shall be mentioned in the tender.
- 20 Any dispute arising out of this contract shall be settled only at the court having jurisdiction of Coimbatore.
- 21 The authority competent to accept the tender reserves the right to reject or accept any tender without assigning any reasons thereof.
- 22 Regarding the acceptance of supply with reference to the specification and quality of materials supplied. The decision of University Registrar shall be final.
- 23 The University's general rules for the supply of the materials and works will apply on this purchase also.
- 24 The tender is submitted subject to and agreeing to the above conditions. Original tender documents should be enclosed otherwise it will be liable for rejection.
- 25 Downloaded tender documents should be accompanied with tender cost and EMD in the form of DD drawn in favour of the Registrar, BU.

Cost of Tender document (to be filled by the tenderer)			
DD/Challan No	Date	Amount	Bank

Details of EMD Amount (to be filled by the tenderer):			
DD/Challan No	Date	Amount	Bank

SIGNATURE OF THE TENDERER

MOBILE NO:

BHARATHIAR UNIVERSITY: COIMBATORE 641 046

Schedule for Supply of Laboratory furniture for Green technology lab in the department of Environmental Science, Bharathiar University at Coimbatore

Sl. No.	Specification	Qty.Req	Rate each	Total Amount Rs. (Nett)
1	<p>Supplying fabricating and erecting Laboratory Centre table with Granite top, Reagent rack and sink. Regular mode of size 4800mm x 1200mm x 900mm . (As per drawing enclosed)</p> <p>Constructions: The table and worktop supported by heavy duty frames, fabricated with 40 x 40 x 1.2 mm thick rectangular box treated with bisphenol resin and corrosion resistant epoxy polymer powder coating (70 - 90 micron thickness texture finish co tube. The frame of rectangular box with a wall thickness of 18 gauge, degreased and epoxy powder coated for smooth finish and protection.</p> <p>The base structure provided with M10 adjustable level mounting boot (Acid resistance PP material Black color).</p> <p>Work Top: Worktop to be of black granite (without any grains) with 19 ± 1 mm thickness. The worktop should not have more than two joints. All exposed sides to be mirror polished and non exposed sides to be of non polished surface. Sharp corner to be half - round nosed off to avoid injury, Grip groove to be provided 2-3 mm wide and depth to avoid spillage lead to powder coated parts.</p> <p>Underbench modular Cupboards: Made up of high quality Electro Galvanized steel Sheet - thickness of 20SWG with Bisphenol resin treatment and corrosion resistant epoxy polymer powder coating (70 - 90 micron thickness texture finish color. Provided with self and soft closing and adjustable door hinges (hinges ISO certified) with a hinge with 270 degree opening with latch and chamfering corner.</p> <p>Under bench storage cabinet modules having one drawer, two shutters cupboard with double walled construction and one adjustable shelf. Cupboards are fitted with proper locking arrangements.</p>	1 No		
	<p>Drawers : Made up of high quality Electro Galvanized steel Sheet - thickness of 20SWG with Bisphenol resin treatment and corrosion resistant epoxy polymer powder coating (70 -90 micron thickness texture finish color. Three Drawers are fitted with Noiseless telescopic smooth heavy duty drawer rails (load capacity 65 kg.) (ISO certified); drawers with full opening and fitted with proper locking arrangements.</p> <p>Sink : Imported Polypropylene sink, acid and alkali resistance, Accurate dimensions, easy maintenance. size: 560 x 340 x 230mm.</p>			

Sl. No.	Specification	Qty.Req	Rate each	Total Amount Rs. (Nett)
	<p>Swan neck laboratory taps.</p> <p>Finish : Furnished with white powder coated finish as standard.</p> <p>Mounting : Bench countrtop mounted with removable locator pins.</p> <p>Body : Forged brass.</p> <p>Headworks : Water saver self-contained compression valve cartridges with replaceable brass seats.</p> <p>Handles : Moulded nylon hooded style handles with index discs. Handles and indeses are color coded and marked per EN 13792.</p>			
2	<p>Supplying fabricating and erecting Laboratory Modular wall side table with Granite top. Fitted with 3 Nos. of safety electrical module with sockets of size 3600mm x 900mm x 750mm . (As per drawing enclosed)</p> <p>Constructions: The table and worktop supported by heavy duty frames, fabricated with 40 x 40 x 1.2 mm thick rectangular box treated with bisphenol resin and corrosion resistant epoxy polymer powder coating (70 - 90 micron thickness texture finish co tube. The frame of rectangular box with a wall thickness of 18 gauge, de-greased and epoxy powder coated for smooth finish and protection.</p> <p>The base structure provided with M10 adjustable level mounting boot (Acid resistance PP material Black color).</p>	2 Nos		
	<p>Work Top: Worktop to be of black granite (without any grains) with 19 ± 1 mm thickness. The worktop should not have more than two joints. All exposed sides to be mirror polished and non exposed sides to be of non polished surface. Sharp corner to be half - round nosed off to avoid injury, Grip groove to be provided 2-3 mm wide and depth to avoid spillage lead to powder coated parts.</p> <p>Underbench modular Cupboards: Made up of high quality Electro Galvanized steel Sheet - thickness of 20SWG with Bisphenol resin treatment and corrosion resistant epoxy polymer powder coating (70 - 90 micron thickness texture finish color. Provided with self and soft closing and adjustable door hinges (hinges ISO certified) with a hinge with 270 degree opening with latch and chamfering corner.</p>			

Sl. No.	Specification	Qty.Req	Rate each	Total Amount Rs. (Nett)
	<p>Under bench storage cabinet modules having one drawer, two shutters cupboard with double walled construction and one adjustable shelf. Cupboards are fitted with proper locking arrangements.</p> <p>Drawers : Made up of high quality Electro Galvanized steel Sheet - thickness of 20SWG with Bisphenol resin treatment and corrosion resistant epoxy polymer powder coating (70 -90 micron thickness texture finish color. Three Drawers are fitted with Noiseless telescopic smooth heavy duty drawer rails (load capacity 65 kg.) (ISO certified); drawers with full opening and fitted with proper locking arrangements.</p> <p>Sink : Imported Polypropylene sink, acid and alkali resistance, Accurate dimensions, easy maintenance. size: 560 x 340 x 230mm.</p> <p>Swan neck laboratory taps.</p> <p>Finish : Furnished with white powder coated finish as standard.</p> <p>Mounting : Bench countrtop mounted with removable locator pins.</p> <p>Body : Forged brass.</p> <p>Headworks : Water saver self-contained compression valve cartridges with replaceable brass seats.</p> <p>Handles : Moulded nylon hooded style handles with index discs. Handles and indeses are color coded and marked per EN 13792.</p>			
3	<p>Supplying fabricating and erecting Laboratory Modular vertical storage Cupboard of size 900mm x 450mm x 1800mm . (As per drawing enclosed)</p> <p>Constructions: The table and worktop supported by heavy duty frames, fabricated with 40 x 40 x 1.2 mm thick rectangular box treated with bisphenol resin and corrosion resistant epoxy polymer powder coating (70 - 90 micron thickness texture finish co tube. The frame of rectangular box with a wall thickness of 18 gauge, de-greased and epoxy powder coated for smooth finish and protection.</p> <p>The base structure provided with M10 adjustable level mounting boot (Acid resistance PP material Black color).</p>	2 Nos		

Sl. No.	Specification	Qty.Req	Rate each	Total Amount Rs. (Nett)
	<p>Work Top: Worktop to be of black granite (without any grains) with 19 ± 1 mm thickness. The worktop should not have more than two joints. All exposed sides to be mirror polished and non exposed sides to be of non polished surface. Sharp corner to be half - round nosed off to avoid injury, Grip groove to be provided 2-3 mm wide and depth to avoid spillage lead to powder coated parts.</p> <p>Underbench modular Cupboards: Made up of high quality Electro Galvanized steel Sheet - thickness of 20SWG with Bisphenol resin treatment and corrosion resistant epoxy polymer powder coating (70 - 90 micron thickness texture finish color. Provided with self and soft closing and adjustable door hinges (hinges ISO certified) with a hinge with 270 degree opening with latch and chamfering corner.</p> <p>Under bench storage cabinet modules having one drawer, two shutters cupboard with double walled construction and one adjustable shelf. Cupboards are fitted with proper locking arrangements.</p> <p>Drawers : Made up of high quality Electro Galvanized steel Sheet - thickness of 20SWG with Bisphenol resin treatment and corrosion resistant epoxy polymer powder coating (70 -90 micron thickness texture finish color. Three Drawers are fitted with Noiseless telescopic smooth heavy duty drawer rails (load capacity 65 kg.) (ISO certified); drawers with full opening and fitted with proper locking arrangements.</p> <p>Sink : Imported Polypropylene sink, acid and alkali resistance, Accurate dimensions, easy maintenance. size: 560 x 340 x 230mm.</p>			
	<p>Swan neck laboratory taps.</p> <p>Finish : Furnished with white powder coated finish as standard.</p> <p>Mounting : Bench countrtop mounted with removable locator pins.</p> <p>Body : Forged brass.</p> <p>Headworks : Water saver self-contained compression valve cartridges with replaceable brass seats.</p> <p>Handles : Moulded nylon hooded style handles with index discs. Handles and indeses are color coded and marked per EN 13792.</p>			

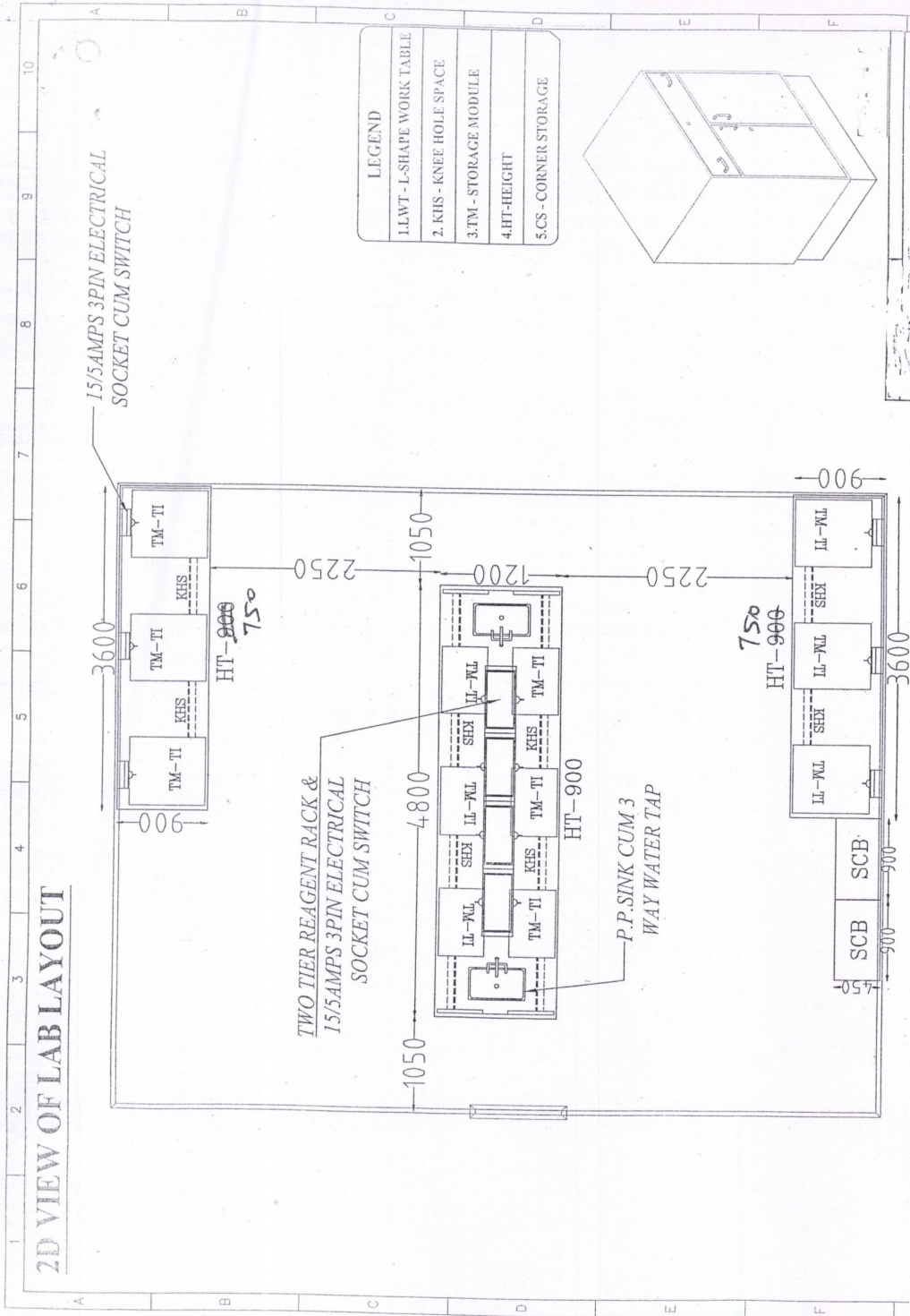
Sl. No.	Specification	Qty.Req	Rate each	Total Amount Rs. (Nett)
3	Revolving laboratory Steel Stool with seat and back made of mild steel tube epoxy powder coated materials. The seat covered with 18 gauge plain steel sheet mounted on 20mm 1.63mm round pipes of 750mm height with adjustment type. the back rest fitted with holding leg round based with maximum safe handling the stool. (Photocopy enclosed)	6 Nos		
Nett amount of Rs.				
NETT rate should be quoted.				

SIGNATURE OF THE TENDERER

NOTE:

- 1 Please quote the price with make of the items, without make the tender will not be considered.
- 2 The University is eligible for exemption of Central Excise Duty as per Government Notification No: 10/97 Central Excise Dt. 1.3.97. Hence, the item price may be quoted separately (i.e.) unit price & taxes etc; only. The University will be given necessary exemption form for Central Excise. It is also eligible for Customs Duty exemption as per the Government Notification No: 51/96 Customs Dt. 23.06.1996.
- 3 The firm may be quoted the rate as per the tender specification, the rate quoted by the firm will be considered if it is only as per the tender specifications. If there is any deviation of specification from the tender specification, the tender will not be considered.
- 4 The Original tender form should be submitted to this office along with the tender schedule.

2D VIEW OF LAB LAYOUT



LEGEND

1. LWT - L-SHAPE WORK TABLE
2. KHS - KNEE HOLE SPACE
3. TM - STORAGE MODULE
4. HT-HEIGHT
5. CS - CORNER STORAGE

